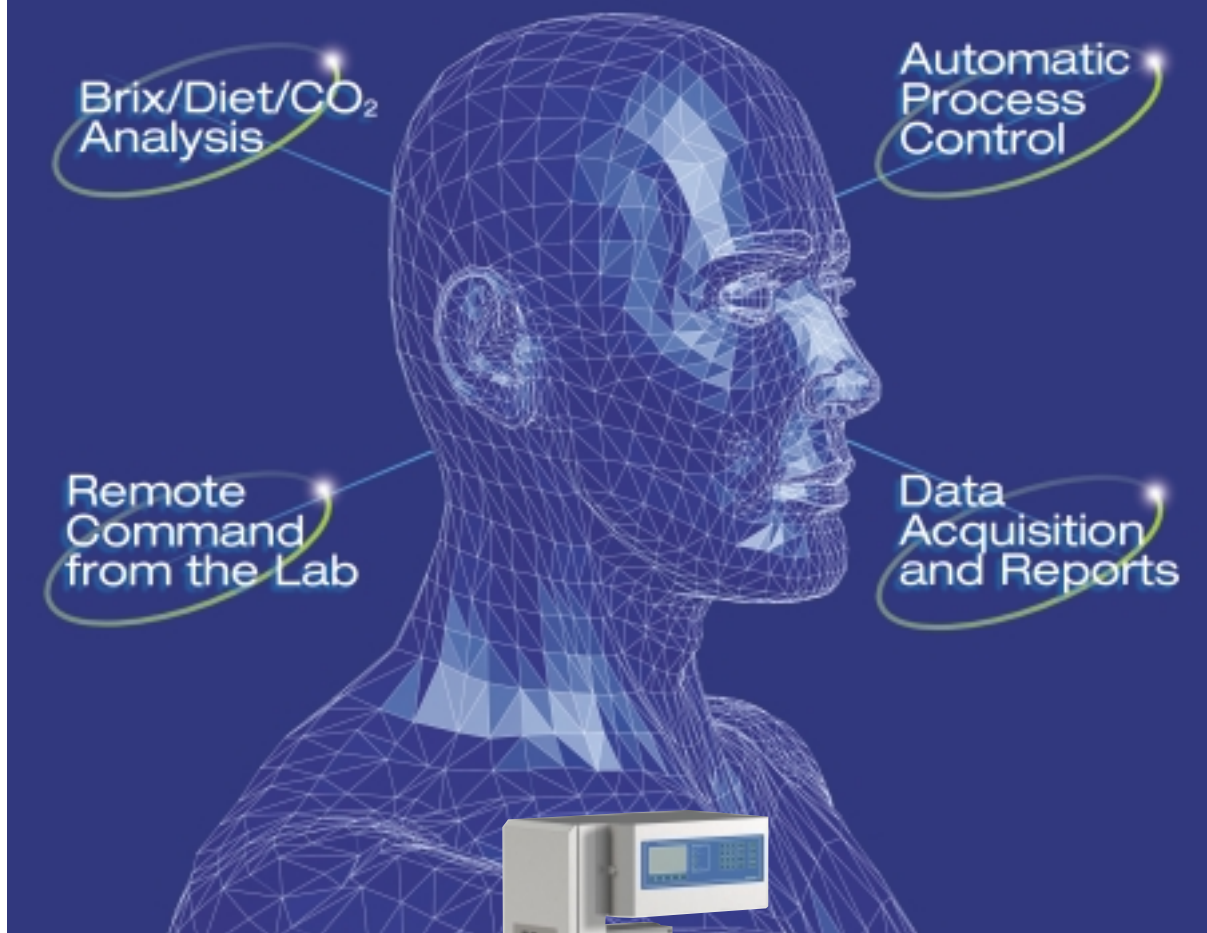


The New Maselli Beverage Analysis System: designed with the Bottler's needs in mind



ZZ2002025

The BAS-02 system:
designed for your needs.

The fully integrated BAS-02 Analysis System provides the total answer for automating the beverage production line. The new IB-04 analyzer assembly monitors the beverage in-line, with the highest accuracy available on Diet flavors. It offers remote command from the Lab, including data acquisition and reporting capabilities, plus optional automatic Brix and CO₂ control. This unique combination of features is without equal... designed, manufactured and serviced by a single supplier.



NEW IB-04 Analyzer Assembly:
the highest accuracy analyzer
for Brix, Diet and CO₂.

- Stainless steel assembly
- Easy on-line installation
- Analysis of both sugar and diet soft drinks
- Brix measurement with digital optical sensor
- CO₂ measurement with pressure-temperature system
- Automatic temperature compensation
- No measurement drift
- Settable alarms
- User programmable recipes
- LCD graphic display
- Analog and digital outputs
- Easy to operate

maselli **M** **INC.**
measurements

Maselli Measurements, Inc.
7746 Lorraine Avenue - Stockton, CA 95210 USA
Tel: 209-474-9178 - Fax: 209-474-9241
<http://www.maselli.com> - e-mail: info@maselli.com