

ON-LINE REFRACTOMETER WITH INTRINSIC SAFETY

UR X1

The UR-X1 refractometric unit with intrinsic safety is made up of a multifunctional monobloc which works in conjunction with power supply and transducer barriers for output signals as required by its ATEX certification:

CE 0722 - II 1 G - Ex ia IIB T4 Ga (Tamb.=45°C)

CESI 03 ATEX 320 X

The refractometer is connected directly to the production line using its auxiliary attachment, and it can determine in real time the refractive index of products in a liquid state.

The data obtained can be displayed and transmitted directly or processed and transformed into concentration level measurements.

The instrument uses the most up to date technology in the field of refractometry such as:

- **hard wearing synthetic sapphire prism;**
- **long-life LED light source;**
- **high resolution CCD optical transducer.**

On the front of the instrument are situated the LCD digital graphic indicator and the control keyboard.

The instrument can be configured on site using the keyboard or remotely using the RS485 connection.

Further more versions with interfaces for ANYBUS COMMUNICATOR (PROFIBUS DP, or others on request) modules are available.

A series of our own attachments;

- food and drink (to be soldered, Tri-clamp®, 3-A, DIN11851, Varivent®)
- industrial (to be soldered, threaded, flanged)

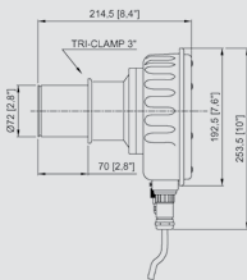
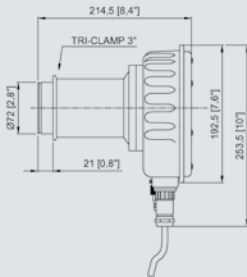
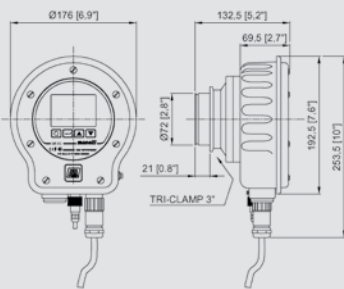
allow the unit to be attached quickly and easily both on the production line and on liquid reservoirs.

The UR-X1 refractometer can be applied on the surface, belongs to category 1 and can be installed in '0 zone', in the presence of atmospheres containing group IIB gas. Its temperature class is T4.



UR X1

Overall dimensions



MASELLI MISURE s.p.a.

43125 Parma - Italy
Via Baganza 4/3
Tel. +39.0521.257411
Fax +39.0521.250484
info@masellimisure.com
www.masellimisure.com

GENERAL CHARACTERISTICS

TECHNICAL CHARACTERISTICS

Measurement limits:

1.3170...1.5318 nD (0...95 Brix)

Amplitude Scale Range:

Minimum 0.0387 nD (15 Brix)
Maximum 0.2148 nD (95 Brix)

Accuracy:

Accuracy 0.3% of Scale Range
Max accuracy ± 0.00007 nD (± 0.05 Brix)

Measurement Scales:

- Brix Scale (refers to the nD/Brix ICUMSA 1974 Conversion tables)
- USER scale can be configured depending on measurement parameters required

Temperature Compensation:

- Automatic between -5 °C... $+105$ °C ($+23$ °F... $+221$ °F)
- Special Version up to 140 °C (284 °F)
- Via external Pt1000 AISI 316 (standard) or internal (special)

Interfaces through Barriers:

- Analogue:
0...20mA or 4...20mA (on 470Ω)
- Digital:
RS422/485 and RS232 which can be connected to ANYBUS COMMUNICATOR Module (fed by DC 24V)

Power supply via interconnection box:

- DC 24V 1A if version with Barriers but without power supply
- AC 100...240V 1A if version with Barriers and power supply

Equipment power supply:

By means of ATEX certified equipment II (1) G [Ex ia] IIB

- CPU section power supply

N° 2 Barriers with galvanic separation, fed by DC 24V mod. D1043Q GM or similar

- Analogue Interface output power supply*

N° 1 Barrier with galvanic separation, fed by DC 24V mod. D1010D GM or similar

- Digital Interface power supply*

N° 1 Barrier with galvanic separation, fed by DC 24V mod. D1043Q GM or similar

- Digital Interface output power supply*

N° 1 Barrier with galvanic separation, fed by DC 24V mod. D1061S GM or similar

(*Optional)

CONSTRUCTION CHARACTERISTICS

Measurement prism:

In synthetic sapphire or optical glass

Light source:

High efficiency LED electronically compensated

Element of refractometric measurement:

High resolution CCD

Element of temperature measurement:

- With Pt1000 inserted on line
- Inside the appliance on request

Controls:

Keypad in scratch-proof polyester

Display:

Graphic LCD display 128x64 point

Language:

Choice of 5 interface languages (English, German, French, Italian, Spanish) for the display of menus and messages

Execution:

- ATEX II 1 G - Ex ia IIB T4 Ga (Tamb.= 45 °C)
- In 304-316 AISI stainless steel and PEEKTM
- Protection IP65 (EN60529)

Weight:

- 3.3 kg (7.3 lb) - Standard Version
- 5 kg (11 lb) - LP Version

Materials in contact with the process fluid:

- 316 AISI stainless steel
- Synthetic sapphire or optical glass
- Viton
- (others on request)

Dehumidification:

The optical section of the unit is dehumidified by means of a Molecular Sieve dessicant cartridge

FLUID OPERATING LIMITS WITH UNIT SWITCHED OFF

Temperature:

-20 °C... $+125$ °C (-4 ... 257 °F) x 30 min or 145 °C (293 °F) x 30 min for the LP version

Pressure:

max. 10 bar (145 psi) at 20 °C (68 °F)
max. 8 bar (116 psi) at 100 °C (212 °F)
Special version for pressure up to 25 bar (362 psi) at 100 °C (212 °F)

ACCESSORIES

- Attachment for pipelines of various dimensions
- Adapter flanges for mounting on tanks or large pipes

